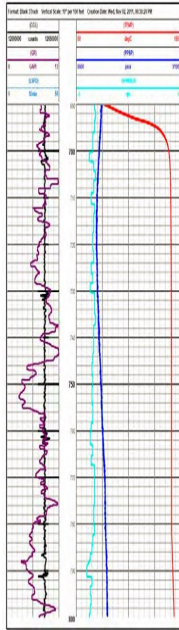


NeoThermal



The NeoThermal logging tool is designed for ultra high temperature down-hole conditions. Our robust surface readout and memory electronics combined with vacuum flask technology allow this product to perform at 350 deg.C (662 deg.F) for up to 4 hours and at 300 deg.C (572 deg.F) for up to 8 hours.

Combining downhole spinner, casing collar locator (CCL), pressure, temperature, and gamma data with our surface depth time recorder NeoDepth system, customers are capable of running a single phase profile log at extreme high temperatures. This tool may be ordered in different configurations such as PT only (pressure and temperature), PTS (pressure, temperature and spinner), or complete parameters (pressure, temperature, spinner, CCL, and Gamma). Tool working mode can be memory only for slickline operation or SRO/Memory for wireline operations. We provide free of charge MaxLog software for operating tool and data processing.

Applications

- Geothermal Well Tests
- Steam Injection Monitoring
- Ultra High Oil Well Tests
- Wellbore Integrity Tests
- Tubing or Casing Leakage Detection



Specification

| Sensor Type | Sapphire/Quartz/RTD/Spinner/Gamma Crystal |
|----------------------|---|
| Pressure > Ranges | 10,000 or 18,000 PSI |
| > Accuracy | ±0.03% (full scale) |
| > Resolution | 0.0003% |
| > Drift | <3 psi / year |
| Temperature > Rating | 350°C (662°F) |
| > Accuracy | ±0.3°C |
| > Resolution | 0.01°C |
| Spinner Range | 5 - 7000 RPM |
| Spinner Accuracy | ±0.5 Revolution |
| Spinner Resolution | 0.08 RPS |
| Communications | USB/RS232 |
| Power Source | C size lithium for memory/ 60V DC for SRO |
| Memory Capacity | 2M data sets |
| Data Set Contents | Time / pressure / temperature |
| Sample Rate | 0.1 second to 1.8 hours per sample |
| Outside Diameter | 1.75" (44.45 mm) |
| Overall Length | 67" (1702 mm) & 82.5"(2096mm) |
| Housing Material | Inconel 718 / Stainless Steel 17-4 |

Neotek Pressure Corp.
info@neotekpressure.com